



Where Materials Flow by Design

Lean Material Flow Solutions

ProFlow Series

Warehouse / DC Carts

1350 Rockefeller Rd., Wickliffe, OH 44092, PH 440.943.4111, info@KtecInc.com, www.KtecInc.com

WAREHOUSE /DC CARTS

K-Tec ProFlow™ Series warehouse and distribution center carts deliver flexibility and top quality to complement lean material handling programs. Standard features include:

- Compact Frame, Formed/Welded Steel Panels
- 1,100 lb. or 1,200 lb. Rated Deck Loads
- Light Tare Weights, Ultra-Quiet Operation
- Choice of Deck Sizes, Picker or Stock Mover Designs
- Low Push/Pull Force 4 Wheel Systems
- Boxed Extended Fork Pockets, Latch or Block Lock
- HD Floor Lock
- Choice of Coupling Systems

INDUSTRY LEADING DESIGN

Carts meet standard ergonomic limits for manual push/pull forces with heavy payloads and standup to tough loading conditions.

FEA (finite element analysis) puts stiffness and weight where needed to produce carts as light and rugged as possible. "Attention to detail" features help meet rigorous K-Tec safety, reliability and durability standards. K-Tec ProFlow™ carts carry a two (2) year limited warranty.

LEAN and GREEN

Our carts extend the safe limits of human power to move loads manually. Tugging trains of heavy boxes and pallets consumes less energy than moving by conventional methods. This translates into reduced handling costs and lower overall emissions along the way. Low maintenance designs provide for low total life cycle costs.

K-Tec's standard ProFlow™ Series of carts with ergo-support products such as lifts and conveyors provide higher capacity and an integrated material flow solution. A "try before you buy" **demo program** for qualified customers delivers a hands on look at specific approaches without wasting investment dollars.

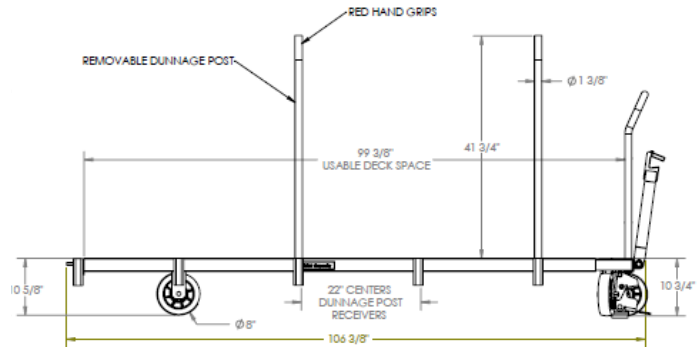
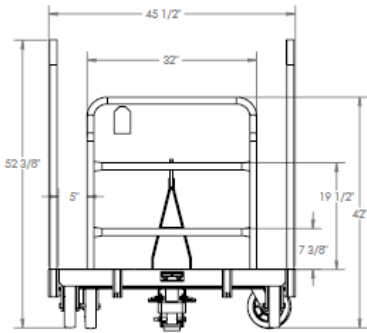


Model: KT1-96SM Stock Mover

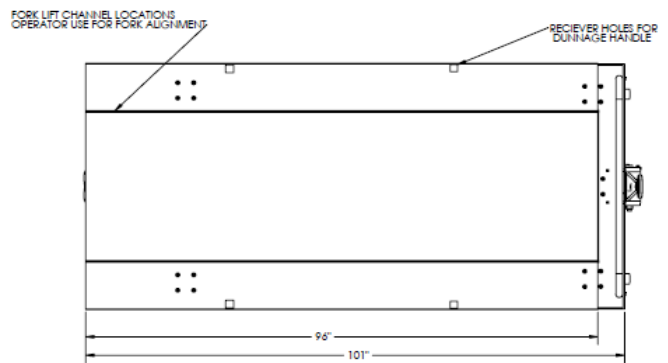
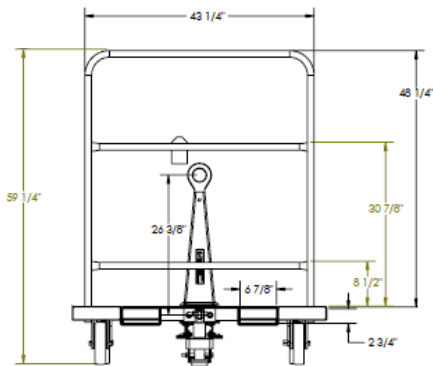
Distributed By:

ProFlow™ Series Warehouse / DC Carts

1350 Rockefeller Rd., Wickliffe, OH 44092, PH 440.943.4111, info@Kteclnc.com, www.Kteclnc.com



Model: KT1-96SM Stock Mover



Model: KT1-96SP Stock Picker

Warehouse / DC Carts

Model: KT1-96SP

Model: KT1-96SM

Standard Features	Model: KT1-96SP	Model: KT1-96SM
Welded Steel, Industrial-Duty Multi-Panel Deck Frame w/o Paint Finish	✓	✓
61" Boxed Extended Fork Pockets, Latch or Block Picker Lock (specify)	✓	✓
4-Wheel Caster Steer w/Kingpinless Swivels, Hybrid Low Push/Pull Force	✓	✓
Precision Sealed Wheel Bearings	✓	✓
Heavy Duty Floor Lock w/ Replaceable Friction Pad	✓	✓
"Operator No-Bend" Heavy-Duty Auto-Hitch and Self Stowing, Reinforced Towbar, Replaceable	✓	✓
Simple Replaceable Hook and Latch, Towbar and Hitch	✓	✓
(4) Deck Load Stop Bars w/Red Hand Grips	✓	✓
(2) Deck Load Stop Racks (same size as handle)	✓	✓
Cart Usable Deck Area	48" x 99"	42" x 99"
Cart Tare Weight	375 lbs.	290 lbs.
Deck Load Capacity (KT1-96SP model conforms to max. picker fork load requirement of 1500 lbs.)	1100 lbs.	1200 lbs.
Rated Load Capacity (to meet ergo guidelines w/standard wheels)	1100 lbs.	1200 lbs.

Application photos, technical specifications and CAD drawings can be found on the web site at www.Kteclnc.com